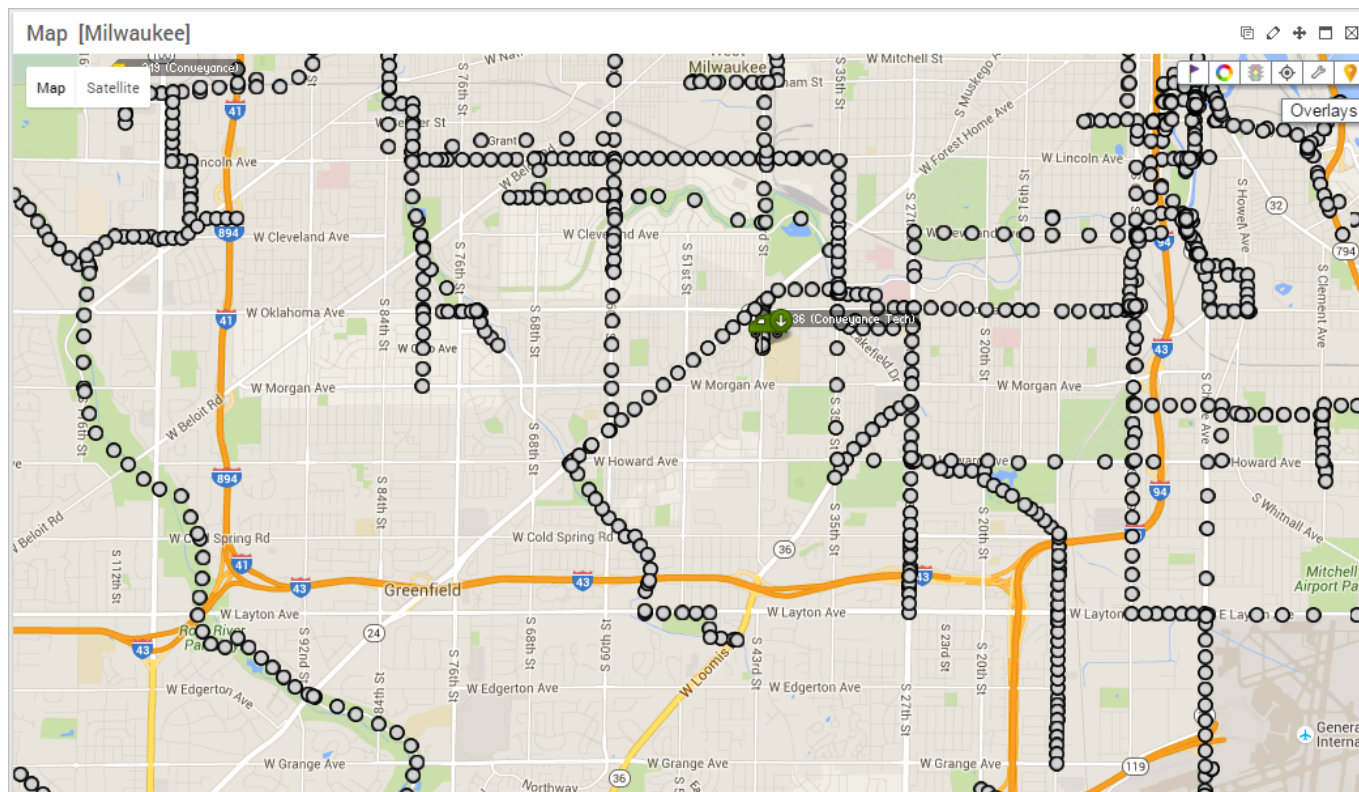


# Adding a GIS Overlay

Link: <https://help.wextelematics.com/docs/about-landmarks/adding-a-gis-overlay/> Last Updated: July 27th, 2016

Geographic Information System (GIS) mapping data, such as ESRI overlays, require assistance from the portal provider's IT Staff. Please contact your account manager or **Customer Support** for more information.



**Note.** It is important to note that these are static overlays for visual reference only. If you need reportable overlay information, you would have to **import KMZ/KML files via Google Earth** or ESRI shape files via Google Earth Pro. Points will be converted to radius landmarks, and bounded areas will come in as landmarks with the same shape. Line data cannot be converted to landmarks.