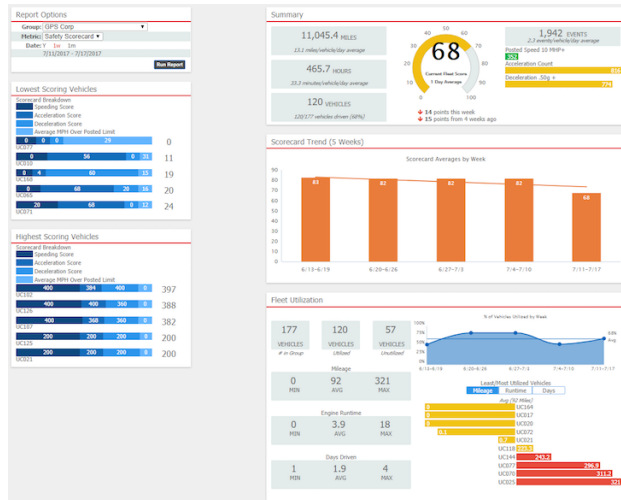


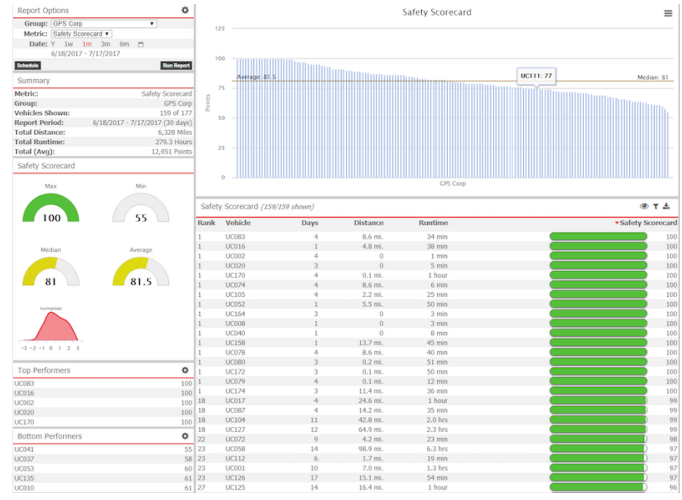
Metrics refers to individual **Custom Metrics**, **Metric Scorecards**, and **Metrics Reports**.

Use Metrics to gain a deeper understanding of your key performance indicators and to help improve fleet utilization. This information is relevant to reducing costs that impact the bottom line.

Executive Summary



Scorecard Report



Scorecard KPIs

- See the number of events
- Add thresholds and weights to events
- See the resulting score for each metric
- Create a final score as a rollup of all metrics scores
- Compare vehicle performance and rank drivers

► Deep Dive: How do I create a safety scorecard?

Custom Metrics

Custom vehicle metrics allow you to determine what key performance indicators to count, measure, score, compare, and calculate. In other words, it's a powerful a tool set that is driven entirely by the items you care about most in your fleet—such as the total number of speeding events, the average speed of speed violations, the total hours idled, the total distance traveled, etc.



Note. There are three varying permissions that you can give a user (or combination of) related to metrics. 1) In order to create/edit custom metrics and use scorecard configuration tools, a user must have the **Custom Metrics** item enabled in the **User Permission List**. 2) In order to run metrics reports (not *create* metrics), a user must have the **Manage Metrics** item enabled in the **Menu Access List** (Custom category). 3) In order to run a traditional metric report, a user must have the **Metrics Scorecard** item enabled in the **Menu Access List** (Report category).

Manage Custom Metrics

Alerts

Scheduled Reports

Custom Metrics

Active Custom Metrics

Metrics summarize daily data for each vehicle on your account. Use the summarizations to generate custom reports.

Metric Type: - ALL TYPES -

Active: ☒

Reportable: ☒

Entity: - ALL ENTITIES -

Subject:

* for wildcard

filter

Label	First Run	Last Run	
Idle %	12/30/2015	3/7/2016	
Idle Time	12/30/2015	3/7/2016	
Vehicle Scorecard	1/1/2016	3/7/2016	
Scorecard Score	2/1/2016	3/7/2016	
Speeding Count	1/19/2016	3/7/2016	
Stop Hours	1/25/2016	3/7/2016	

14 Metrics found.

Active Scoring Tools

Metric Type: - ALL TYPES -

Active: ☒

Type: - ALL TYPES -

Subject:

* for wildcard

filter

Page: 1-20 / 21-28

Show All 28: ☐

Label	
Events Scale 0 and 5	
Speed Scale	

1-20 of 28 Metrics found.

Metrics List

Vehicle

+ Vehicle Scorecard

+ Sum Scorecard

+ Hours Vehicle Stopped

+ Hours Vehicle Idled

+ Runtime Hours

+ Distance Vehicle Traveled

+ Count Vehicle Stops

+ Count Vehicle Idle Stops

+ Count Vehicle Landmark Visits

+ Count Driver Assignments

+ Count Speeding Events

+ Count Alerts Triggered

+ Maximum Speed

+ Average Delta for Posted Violations

+ Average Speed for Speed Violations

+ Count Acceleration Events

+ Count Deceleration Events

+ Count Drivers

+ Average Idle Hours

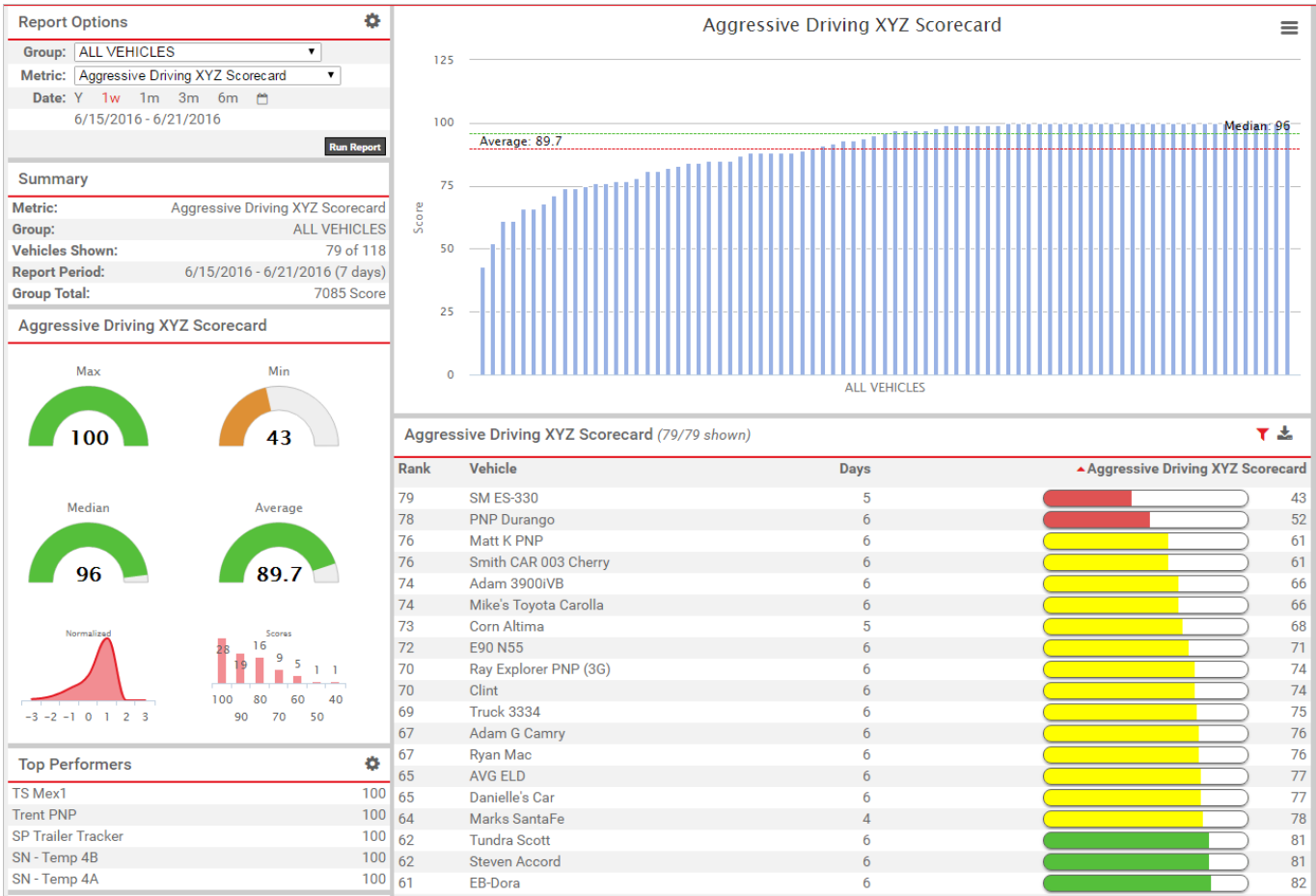
System Metrics

The summarization data for some device-based events are automatically available to you as a system metric. System metrics are not customizable, but you can report on them using Metrics Reports and dashlets:

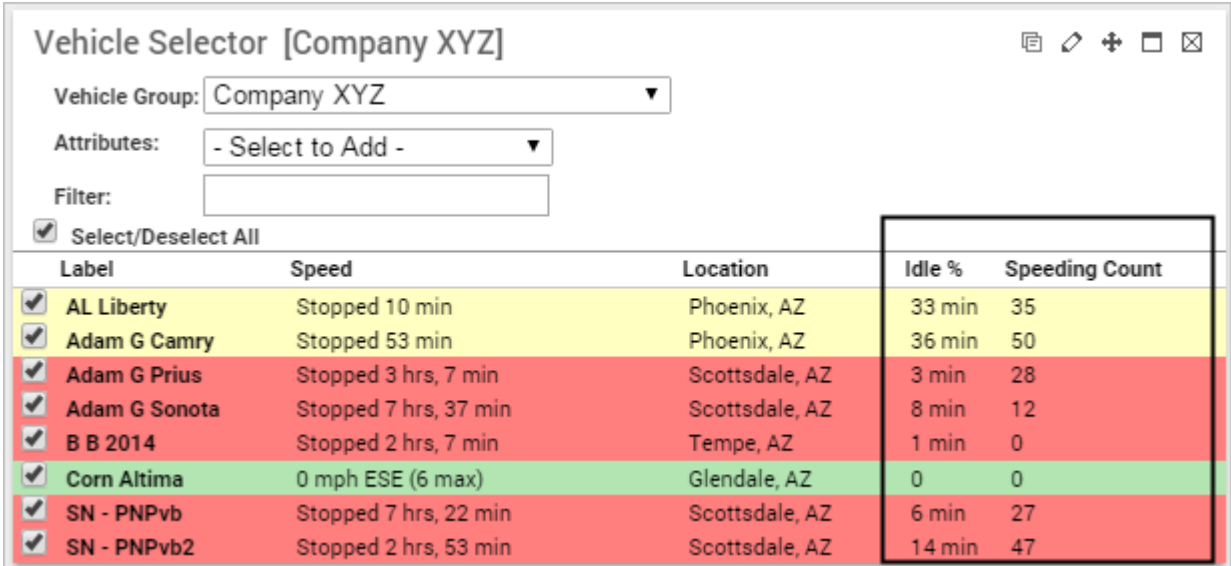
Device Type	Description	Metric(s)
Custom Device Inputs	Devices that have been configured to use custom inputs (e.g., snow plow up/down, seatbelt on/off, etc.)	Two metrics per input: <ul style="list-style-type: none">•Count of event•On duration of event
PNP-3000	Devices that have the optional buzzer feature for in-cab alerts.	<ul style="list-style-type: none">•Hard Braking Count•Hard Left Count•Hard Right Count•Idling Count•Rapid Acceleration Count•Speeding Count

Metrics Reporting


Use the **Metrics Reports tool** to view summary, detail, and trend data about an **existing metric** or **scorecard** (collection of metric scores) using various charts and tables.



You can also view individual metrics from several places on the dashboard and the traditional reporting interface, such as the Vehicle Selector dashlet, Utilization Rollup dashlet, and the Fleet Hierarchy Rollup report.



Utilization Rollup						
Node	Vehicles	Distance	Engine Hours	Idle Time	Trips	Days
▼ Company XYZ	10	2,267.80 mi.	79.2 hrs	9.6 hrs	306	56
▼ Arizona	10	2,267.80 mi.	79.2 hrs	9.6 hrs	306	56
Phoenix	3	988.70 mi.	25.1 hrs	2.3 hrs	82	17
Scottsdale	3	715.90 mi.	26.7 hrs	1.3 hrs	121	17
Mesa	2	307.90 mi.	12.2 hrs	1.6 hrs	37	10
Globe	2	255.30 mi.	15.1 hrs	4.4 hrs	66	12

 **Note.** The Metrics feature is currently available for US customers only.