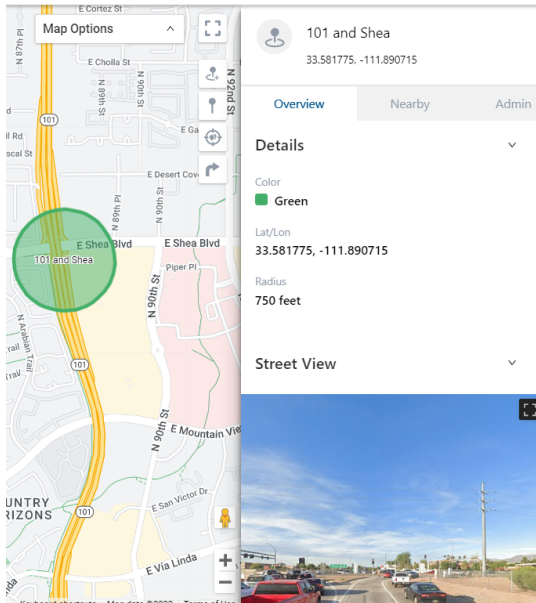


When you click on a landmark from the **Landmark list**, the Landmark Card for the selected landmark appears. With the Landmark Card, you can view or copy landmark coordinates, view a landmark in Google Maps in a separate browser tab, edit a landmark, send a dispatch, view trip history within the landmark, view landmark overview details, view nearby assets, and look at street view.

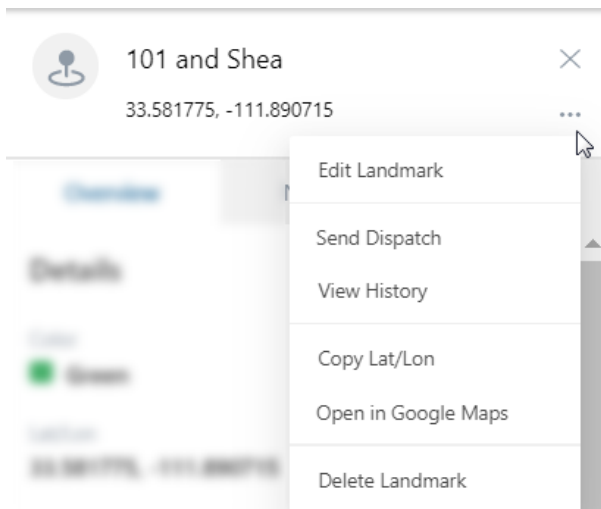


Using the Card Header

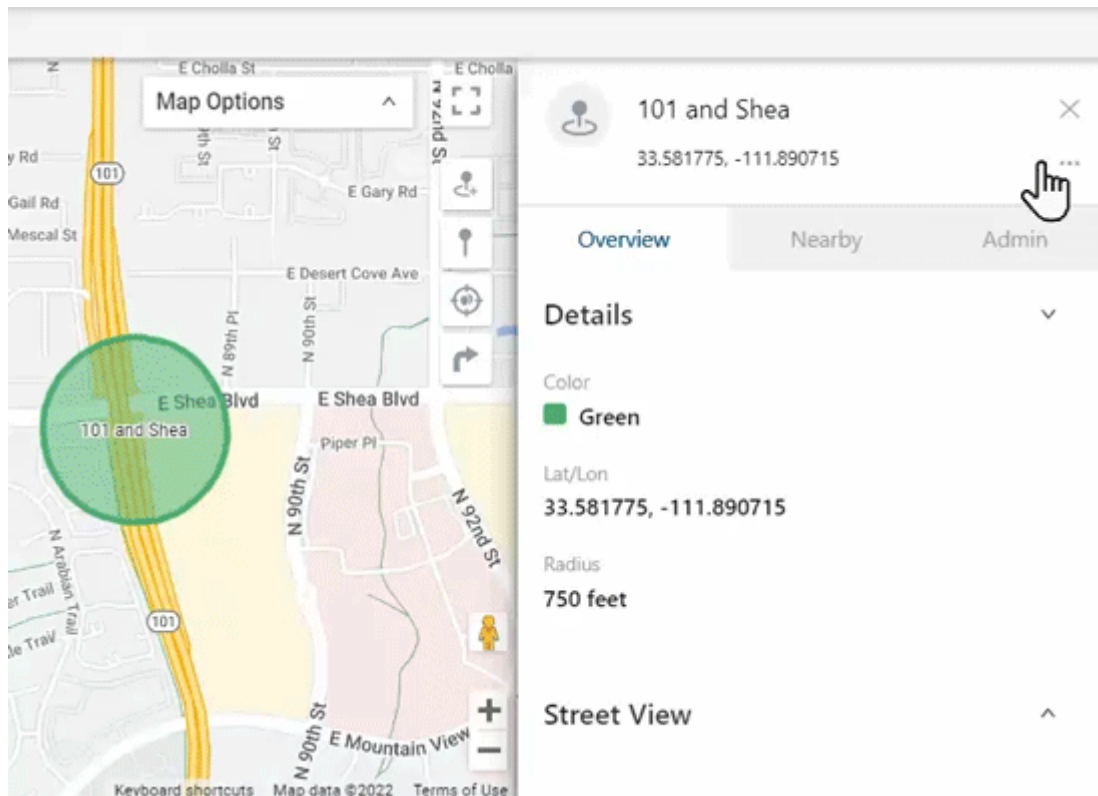
From the Card Header, you can view the landmark coordinates, edit the landmark, send a dispatch, view history, copy the lat/lon coordinates(provided under the Landmark name), open Google Maps in a separate browser tab to view the location, or delete the landmark.

Using the Ellipsis button

Using the ellipsis button from the Card Header, you can edit the landmark, send a dispatch, view history, copy the lat/lon coordinates(provided under the Landmark name), open Google Maps in a separate browser tab to view the location, or delete the landmark.



► How to edit a landmark:



1. After clicking the ellipsis button from the Card header, click **Edit Landmark**.

The Admin tab of the Card is shown.

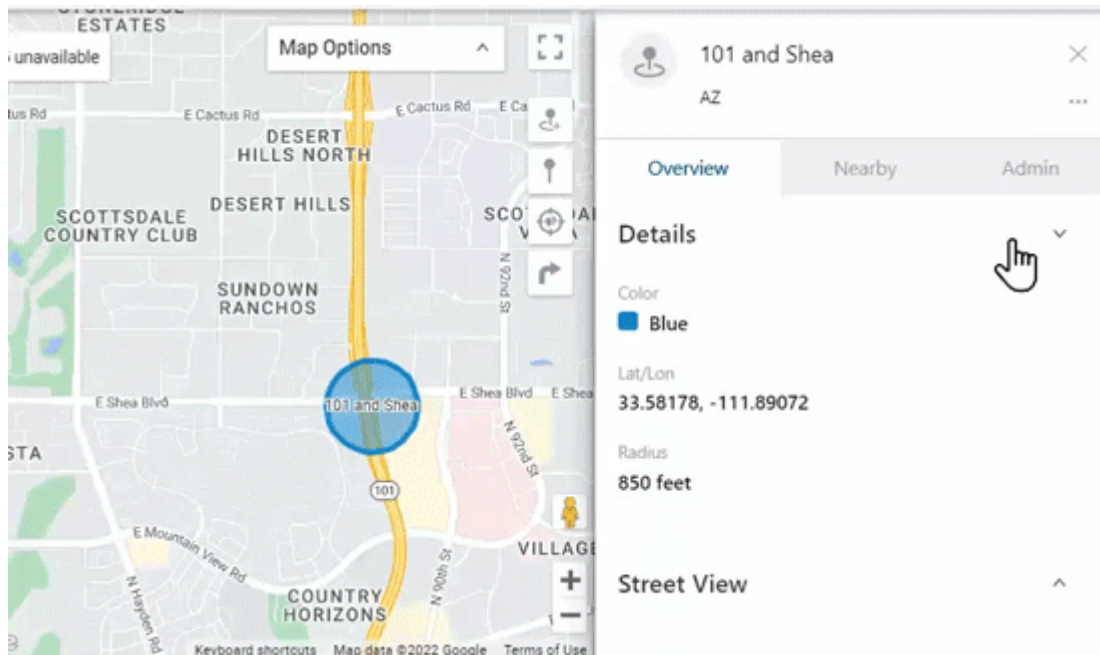
2. Make your edit(s) to the landmark. Available edits include:

- Shape (circle or polygon)
- Name
- Color
- Address (Street, City, State, Country, Zip)
- Radius (feet or meters)
- Landmark Group Membership

3. Click **Save**.

The edits to the landmark are saved and reflected on the Landmark Card and on the Map.

► How to send a dispatch:



1. After clicking the ellipsis button from the Card header, click **Send Dispatch**.

The dispatch pop-up appears.

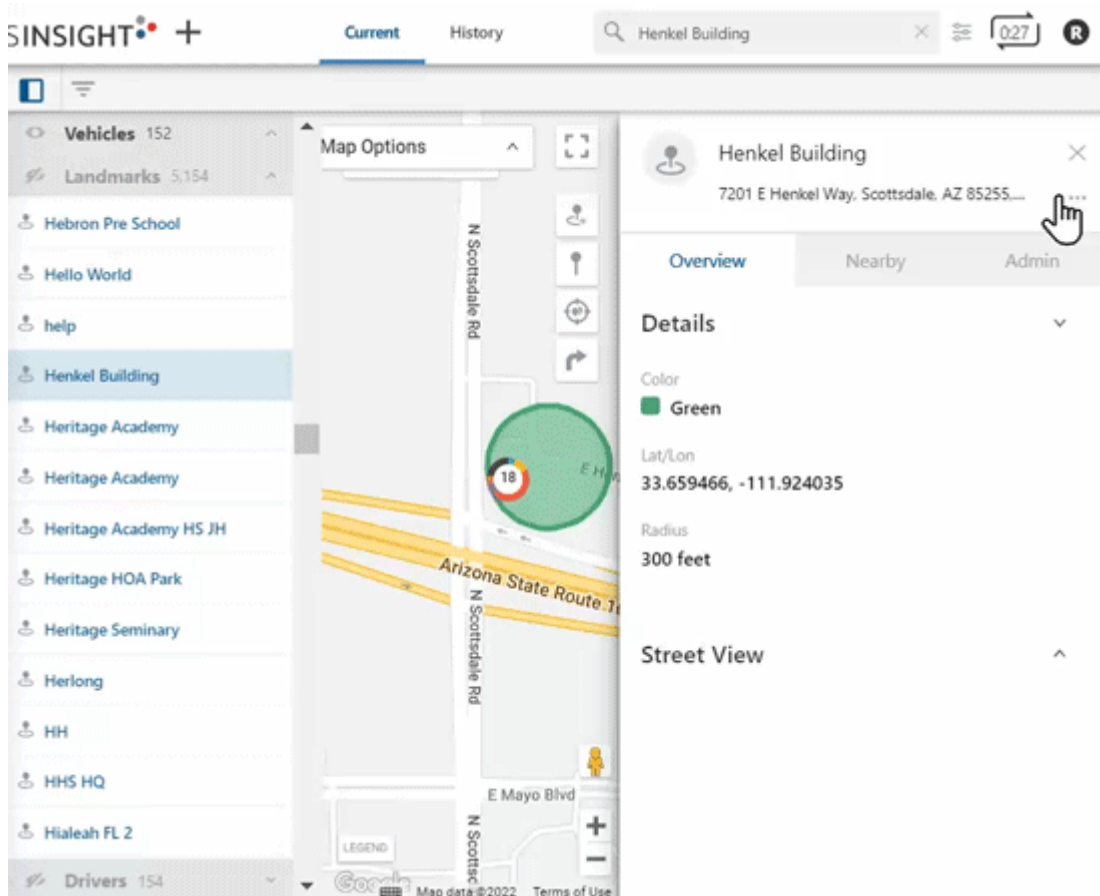
2. Use the To: field to enter the driver and/or vehicle information in the Recipient(s) field.
3. The Landmark information is automatically populated with the selected landmark.
4. Click **Send**.

The driver/vehicle will receive a text and/or email notification with the dispatch location.

► How to view trip history:

Using the Landmark Card

Link: <https://help.wextelematics.com/docs/about-the-map-page/available-map-cards/using-the-landmark-card/> Last Updated: June 7th, 2019



1. After clicking the ellipsis button from the Card header, click **View History**.

A Time Range pop-up window appears.

2. Select the date on the calendar you wish to view along with the time window by using the drop-down time selector accessed by clicking on the Start Time and End Time.



Note. You may view up to a 3 hour time range.

3. Click **View History**.

The Trip History Page appears.

4. Click the Play icon to play a record of trip history collected in the time window selected.



Note. If you would like to change the Playback speed setting, click the Setting icon then click the current Playback setting. The available playback speed options are displayed. Click on the desired playback speed.

► How to copy the landmark address:

1. From the Card Header, click on the ellipsis button (...).

A pop-up window appears.

2. Click **Copy Lat/Lon**.

The address is copied to your system's clipboard. You may paste this address within the Portal or externally (e.g., separate browser tab, etc.).

► How to view the location in Google Maps:

1. From the Card Header, click on the ellipsis button (...).

A pop-up window appears.

2. Click **Open in Google Maps**.

A separate browser tab opens displaying the location in Google Maps.

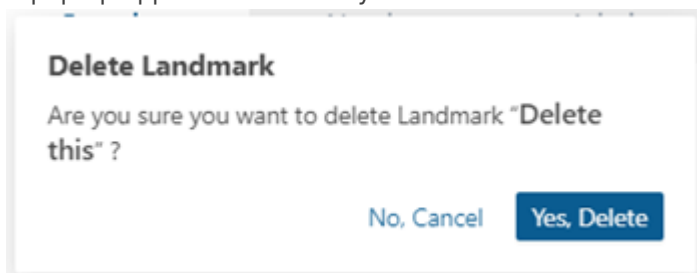
► How to delete the landmark:

1. From the Card Header, click on the ellipsis button (...).

A pop-up window appears.

2. Click **Delete Landmark**.

A pop-up appears to confirm you would like to delete the landmark.



3. Click **Yes, Delete** to delete the landmark or **No, Cancel** to exit.

If you clicked **Yes, Delete**, a pop-up window appears confirming the landmark was successfully deleted.

Using Landmark Card Task Bar

Using the Landmark Card Task Tabs, you can view landmark details in the Overview tab, see assets or landmarks that are near the landmark in the Nearby tab, or edit landmark details from the Admin tab.

Using the Landmark Card

Link: <https://help.wextelematics.com/docs/about-the-map-page/available-map-cards/using-the-landmark-card/> Last Updated: June 7th, 2019

