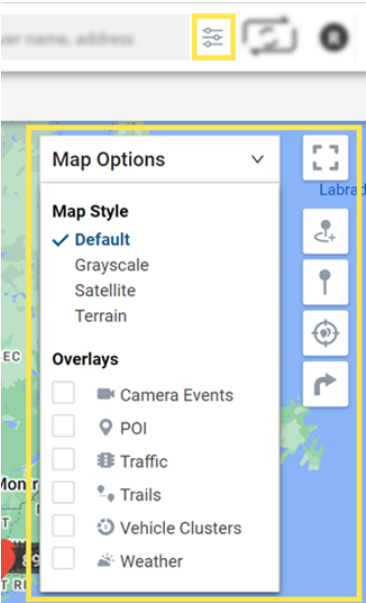
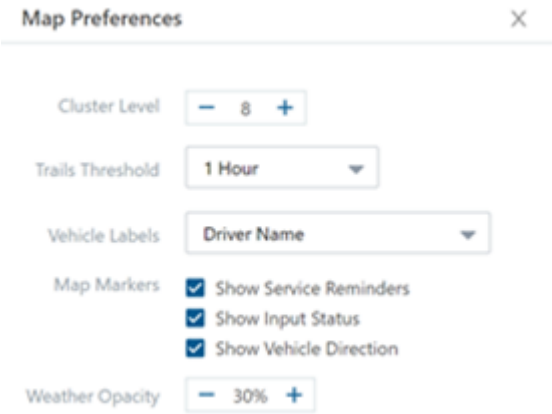


Use the Map Preferences, Options, and Controls to interact with and view the map the way you prefer.




## Map Preferences

Click the Preferences button to adjust cluster levels, trail threshold, vehicle labels, map markers, and weather opacity.



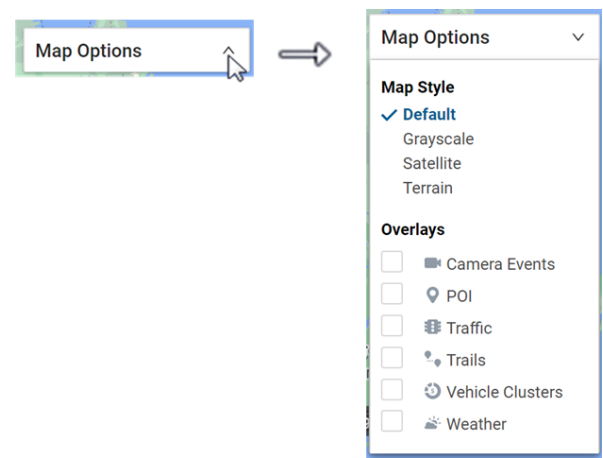
Preference	Description
Cluster Level	<p>Set cluster level from 1-15.</p> <p><b>Note.</b> Represent more than one vehicle in a similar location with a clustered circle. Clusters provide enhanced clarity when viewing a bird's eye view of a map with a large number of vehicles. As you zoom in and vehicles appear farther apart, clusters update accordingly. The number in a cluster's center indicates the vehicles included, and the ring around the cluster indicates the statuses of the clustered vehicles.</p>
Trails Threshold	<p>Set the maximum amount of time for vehicle trails from the following options: 15 min, 30 min, 1 hr, 12 hrs, 24 hrs)</p>


Preference	Description
Vehicle Labels	Set your preference for the vehicle display label from the following options: Vehicle ID, Driver Name, Vehicle ID and Driver Name, Driver Name and Vehicle ID.
Map Markers	Check the box next to the map marker(s) you would like to display on the map. Options include Show Service Reminders, Show Input Status, and Show Vehicle Direction.
Weather Opacity	Set the opacity for weather to display on map in percentage (Default is 30%, minimum is 10%, maximum is 100%)

**Note.** The Driver feature is available to Enterprise customers only. Please contact your Account Manager if you would like additional information.

## Map Options

Click on the arrow to expand the drop-down menu to select your map options.



Option	Description
Map Style	Select your preferred/required style of map. Options include: Default, Grayscale, Satellite, Terrain.
Data Source	Check the box next to Clusters to display vehicles in clusters and/or next to Landmarks to display landmarks on the map.
Overlays	Check the applicable box(es) to select your overlay display selection. Options include: POI (Points of Interest), Traffic, Trails, Weather.  <div><b>Note.</b> For the Traffic Overlay: Identify the speed of traffic on the road compared to free-flowing conditions. For highways, green means there is a normal speed of traffic. The redder the road becomes, the slower the speed of traffic on the road. Gray indicates there is no data available.</div>





## Full Screen View

Click the Toggle Fullscreen View button to expand the map to full screen view. To exit full screen, press the Escape (Esc) button on your keyboard.



## Map Controls

Use Map Controls to perform actions on the map. Choose from the actions listed below.

Control	Description
	<b>Create Landmark:</b> Create a landmark anywhere on the map.
	<b>Drop Pin:</b> Place a pin on a map and move it as needed by dragging-and-dropping it to any location. The Dropped Pin Card appears (right-hand side of screen) and you can then quickly dispatch to/from this location, find the closest vehicle, obtain location address, or create a landmark for repeated use.
	<b>Focus All:</b> Focus the map over all fleet assets as selected in the Vehicle List by an automatic zoom in/zoom out.
	<b>Send Dispatch:</b> Quickly send a dispatch to a landmark, vehicle, or address to selected recipient(s).