

The installation kit contains a registration card, the TT-1800, and one activation magnet (red tag). Additional tools and supplies you need include four self-tapping, galvanized, tapered head screws or four galvanized bolts with washers and locking nuts, and one serialized security tag.

Complete the registration card by locating the seven-digit serial number on top of the device and copying the last six digits onto the card. When the card is complete, you may begin the installation.



Installation Overview

The following steps provide an overview of the installation process:

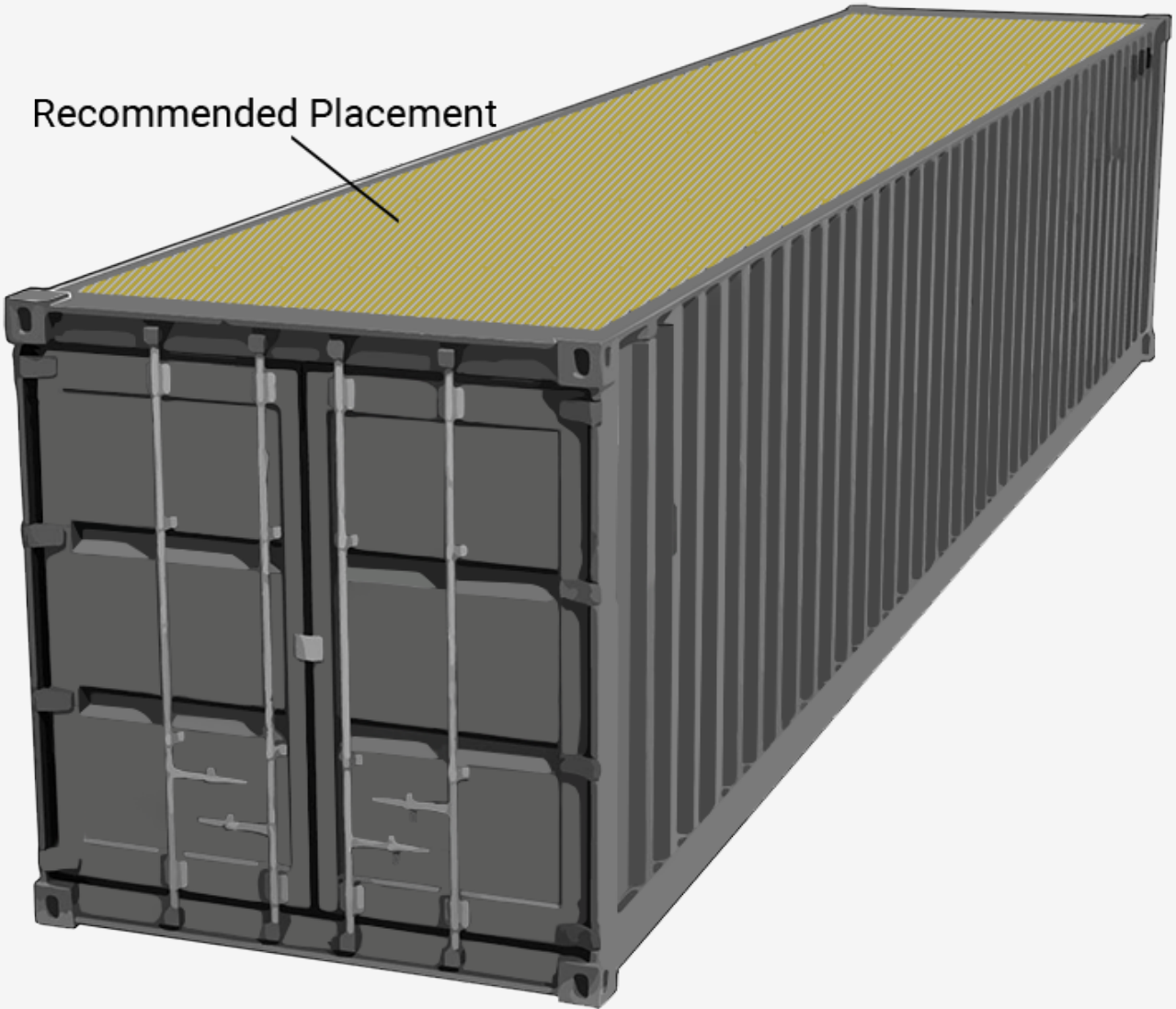
1. Locate a suitable mounting location.
2. Secure the mounting bracket to the asset.
3. Secure the device to the mounting bracket.
4. Register your device.

Installation Steps

1. Locate a suitable mounting location.

Identify an area that is horizontal, flat, and has an unobstructed view of the sky. Additionally, this area needs to be safe from potential damage due to normal operation of the asset.

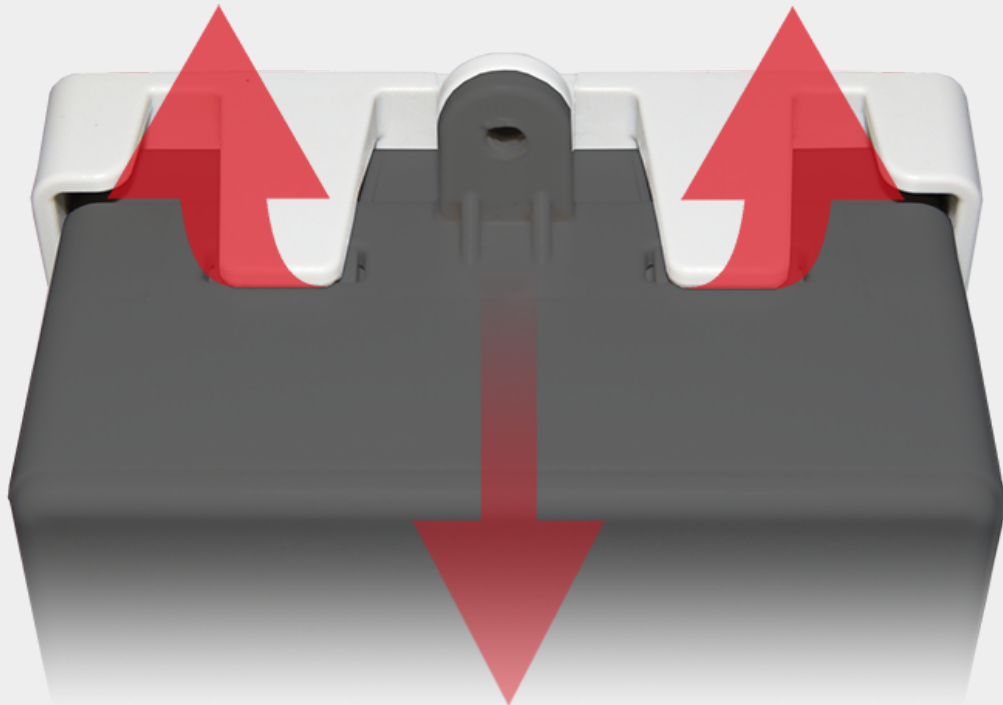
Recommended Placement



2. Secure the mounting bracket to the asset.

1. Separate the device from the mounting bracket.

To separate, carefully pull up on the two clips, and pull the device forward.

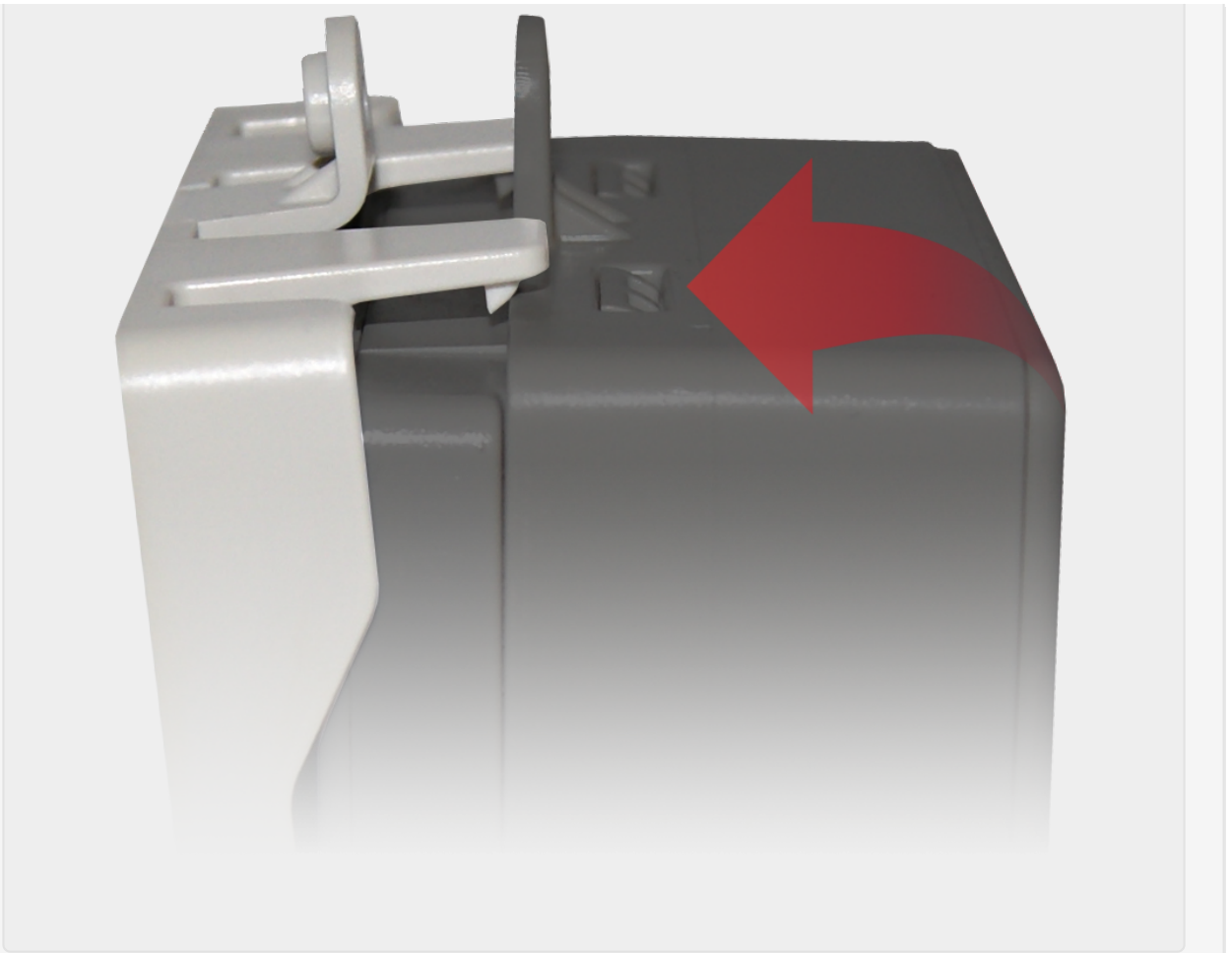


2. Using four self-tapping, galvanized, tapered head screws or four galvanized bolts with washers and locking nuts, secure the mounting bracket to the asset.

3. Secure the device to the mounting bracket.

1. Place the device back into the mounting bracket

Align the bottom of the device with the bracket, and push the top of the device back until you hear a click.



2. Secure the device to the mounting bracket using a serialized security tag and the eyelets provided on top of the device and bracket.

4. Register your device.

To activate your device, with your registration card in hand, use the Wex Telematics **Verification App** via smart phone (**iOS|Android**). If you have any verification questions, please call 866-666-5061.

Be sure to use the same logic in step 1 removing the serial number prefix when entering the serial number into the App.