

Feature Updates

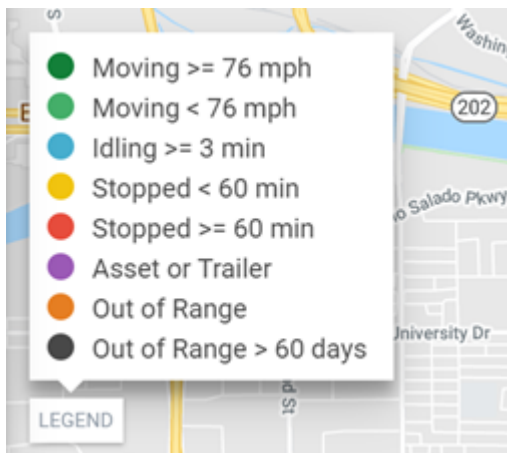
Link: <https://help.wextelematics.com/release-notes-1-31-2020/> Last Updated: January 28th, 2020

This Product Release Notes announcement for Wex Telematics **Standard, Pro and Enterprise** customers includes updates for Map, Hardware and Bug Fixes.

Map

Map - Legend

You can now view the vehicle legend by clicking the Legend button at the bottom left corner of the map.



Hardware

ST-1200

The ST-1200 is the newest version of the popular ST-1100 with superior solar-powered asset tracking functionality with highly improved battery efficiency and recharge.

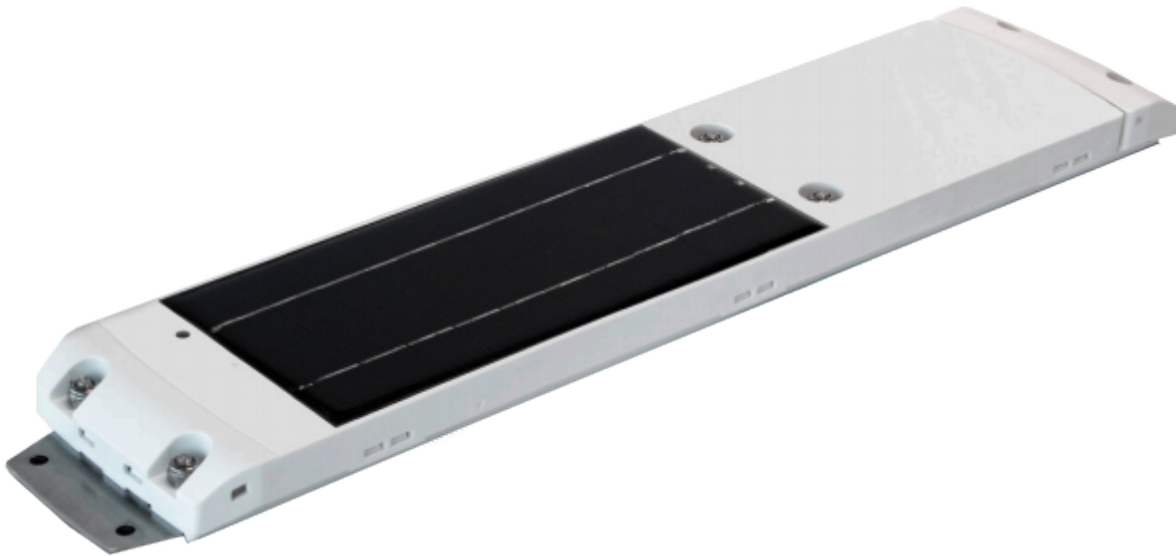
The ST-1200 is a solar-powered cellular device for non-powered assets like trailers and cargo containers. The device reports both motion and static updates every 15 minutes when in motion, and every 6 hours when not moving.

Check out the installation guide here: [ST-1200 Installation Guide](#).

For more details on the device, see the device page here: [ST-1200 Device Page](#).

Feature Updates

Link: <https://help.wextelematics.com/release-notes-1-31-2020/> Last Updated: January 28th, 2020



Bug Fixes

Bug Fixes & Enhancements

- Bugs were fixed for the Portal and Mobile Apps
- UX enhancements were deployed.