


## DriveriHub Installation Guide

February 2022



## Table of Contents

<b>1</b>	<b><i>Introduction</i></b> .....	<b>3</b>
<b>2</b>	<b><i>Pre-Requisites for Installation</i></b> .....	<b>3</b>
	2.1 Components Required for Installation .....	3
	2.2 Installer App .....	3
	2.3 Vehicle information.....	3
<b>3</b>	<b><i>Installing Cameras</i></b> .....	<b>5</b>
<b>4</b>	<b><i>Dhub power connections</i></b> .....	<b>6</b>
	4.1 Installing external trailer cameras in conjunction with the truck cameras .....	8
<b>5</b>	<b><i>External Camera Settings in IDMS</i></b> .....	<b>11</b>
	5.1 Configuring Camera Settings at the Vehicle Level.....	11
	5.2 Configuring Camera Settings at the Fleet Level .....	12
<b>5</b>	<b><i>Pairing the DriveriHub with the Driveri Device</i></b> .....	<b>12</b>

## 1 Introduction

DriveriHub is an external device that enables you to extend Driveri to connect to external cameras and offer a 360<sup>o</sup> view of the vehicle. Customers can add up to 4 external cameras to the existing installation. DriveriHub connects to Driveri wirelessly and enables customers to seamlessly request videos over the IDMS platform for coaching or event analysis.

This document describes the components of DriveriHub and walks you through the instructions to install DriveriHub and pair it with the Driveri device.

## 2 Pre-Requisites for Installation

Before you begin installing DriveriHub, ensure that you have the following components and vehicle information handy.

### 2.1 Components Required for Installation

The following table lists the components required to install DriveriHub:

### 2.2 Installer App

- DriveriHub
- Wi-Fi antenna (comes with DriveriHub)
- Power Cable (comes with DriveriHub)
- External Camera(s)
- Camera Extension Cable(s)
- Camera side mirror mounting bracket(s)
- Installer App
- 7-Way connection if mounting cameras on a detachable trailer if required
- Dielectric grease

### 2.3 Vehicle information

The following information is required to order the correct DriveriHub equipment:

- Vehicle Make, Model, and Year
- Vehicle Identification Number (VIN)
- Picture of the mirror bracket (in some cases)
- Position on vehicle to mount cameras. For example, Driver and Passenger mirrors, rear of vehicle, or side of vehicle.
- Expected views



○ **External Cameras and Extension Cables**

- There are different types of cameras, both vertically mounted, and horizontally mounted. The choice of camera depends on the application. It is very important that the correct camera is installed for the correct image orientation.
- Various resolution and heated chip cameras are sometimes required.

Every vehicle will need an extension cable to reach from the camera to the DriveriHub. The length of cable may vary between vehicle types. Extension cable lengths range from 3 meters to 20 meters

**Choosing placement of DriveriHub**

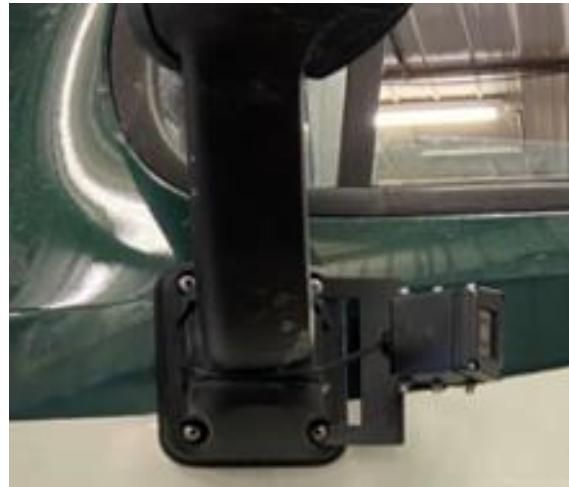
- Chose a dry location within reasonable distance of the vehicles 12V power source. (Behind the dash, under the "dog house", etc.) Keep in mind the power cable is 6 ft long. (Example pics below)



- Route the power cable from power source to the DriveriHub
- Route the Wi-Fi antenna toward the upper part of the dash if possible.
- The Wi-Fi antenna will need to be within 6-8 feet of the Driveri camera for optimal connectivity.
- Secure the antenna with the attached 3M tape, or zip tie it off.
- The Wi-Fi antenna does not need to be on top of the dash like the GPS antenna (Driveri)
- Do not mount the DriveriHub at this point. You may need access the QR code on the side of the Dhub

### 3. Installing Cameras

- Using vehicle-specific and/or universal mounting brackets, attach the cameras to the vehicle facing the rear (Pics below)
- **Keep in mind there are vertical cameras and horizontal cameras**
- Final camera adjustments will be done while connected to the Installer App after installation



- Be sure to use dielectric grease on all external cable connections to prevent corrosion.
- connection with no grease used



- Route the camera extension cable from the camera to the interior of the vehicle to the DriveriHub.

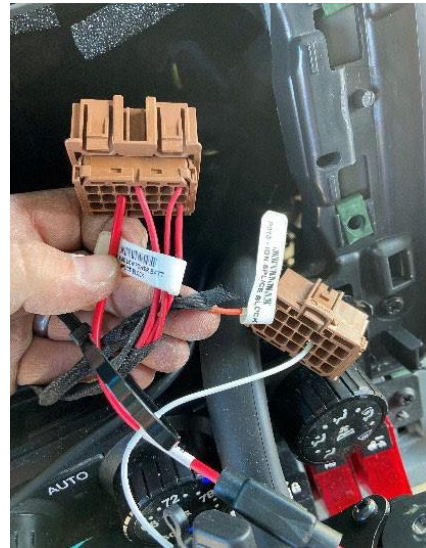


- Make sure to keep the extension cable away from moving parts and pinch points, attaching with zip ties along the way.
- Wrap up any access cable inside prior to connecting cable to the DriveriHub.
- Connect the extension cables to the DriveriHub ports 1&2 (1 Driver side- 2 Passenger side)

***\*If installing cameras on trailer see 4.1***

## 4. Dhub power connections

- Connect the Red wire to a Constant 12V Battery source
- Connect the White wire to an Ignition 12V source
- Connect the Black wire to a solid ground source



**Note the following points regarding the DriveriHub LED indicators:**

- **ERR light flashes RED constantly:**
  - Indicates that the Wi-Fi module is recognized by the DriveriHub and is operating normal.
  - If no flash is present (or red light is solid), it indicates that the DriveriHub is not working properly, and troubleshooting must be done.
- **PWR light will be solid GREEN.**
- **SD light will be solid GREEN.**
- **Device must be in the locked position to record.**
  - If the key is used to place device in the unlocked position, all lights will turn off and the device will not function.

#### 4.1 Installing external trailer cameras in conjunction with the truck cameras

- 4.1.1 Route the extension cables from Dhub ports 3&4 to the rear of the trucks 7-Way connector



- 4.1.2 Labeling the extension cables on each end help consistency
- 4.1.3 The 7-Way socket will need to be installed near the existing 7-Way
- 4.1.4 A 7-Way bracket and hardware may be needed



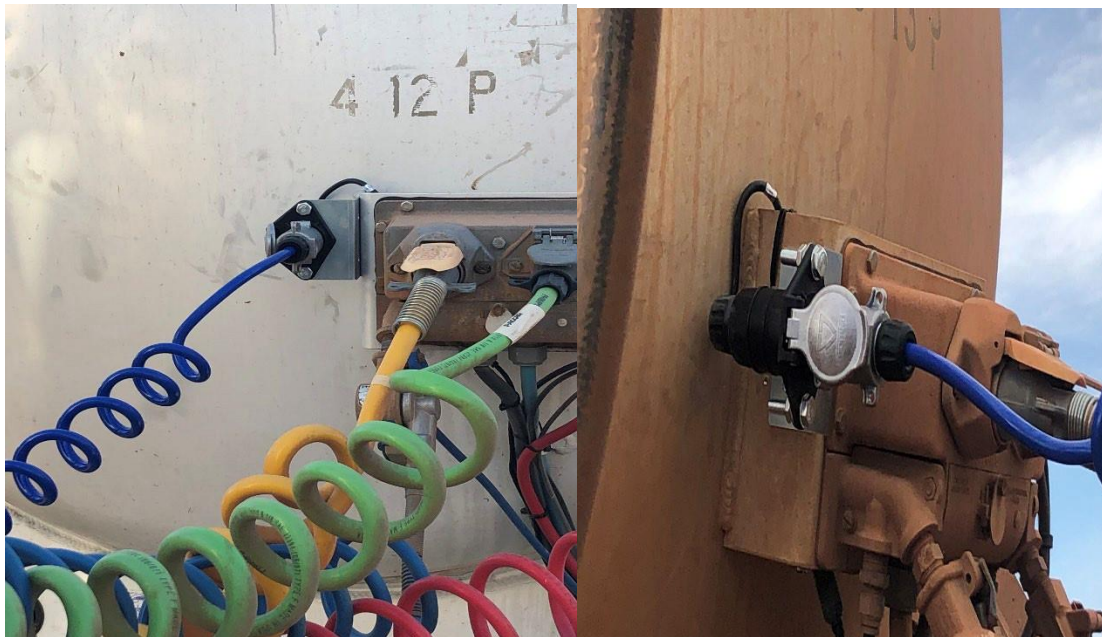
- 4.1.5 The Truck side 7-Way and the Trailer side 7-Way cable connections are different.
- 4.1.6 Truck side pic 1 (TPE2-7CAB) Trailer side pic 2 (TPE2-7-TRK)





Trailer 7-Way is mounted on the front of the Trailer near the 7-Way and Gladhand connections

A 7-Way bracket and hardware may be needed for the trailer as well.



Route the extension cables to the chosen camera mounting positions on the trailer  
It helps to route the cable along with existing cables or airlines.



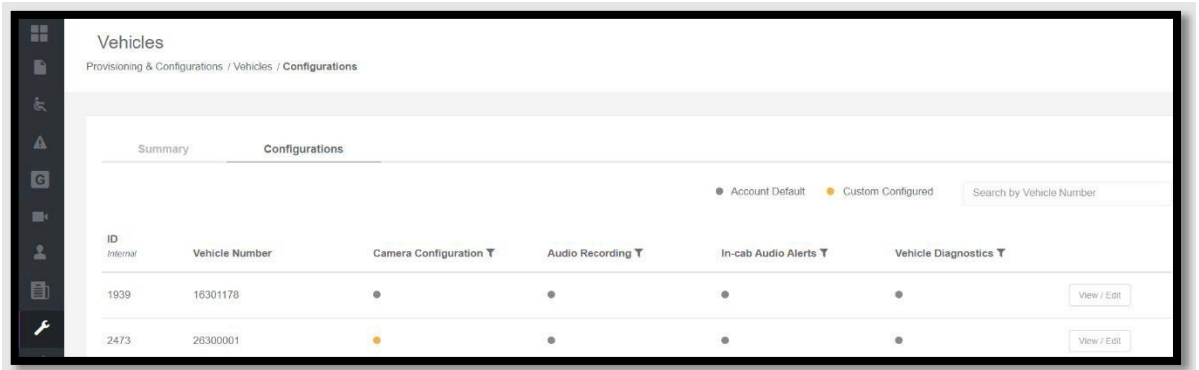
## 5. External Camera Settings in IDMS

The camera configurations can be made at the vehicle level and at the Fleet level.

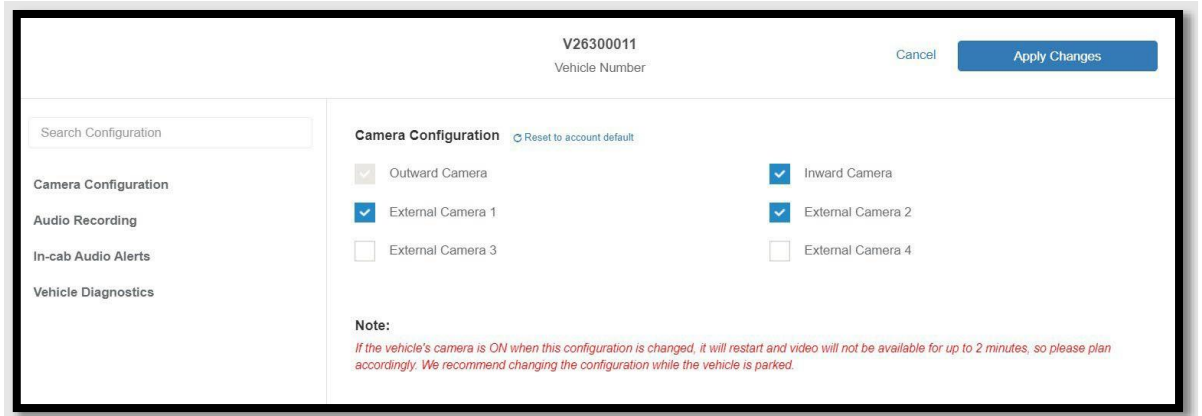
### 5.1 Configuring Camera Settings at the Vehicle Level

To configure the camera settings for a vehicle:

1. Navigate to **Provisioning & Configurations > Vehicles**.
2. Click the **Configurations** tab.



3. Click **View/Edit** corresponding to the vehicle for which you want to edit the camera settings.



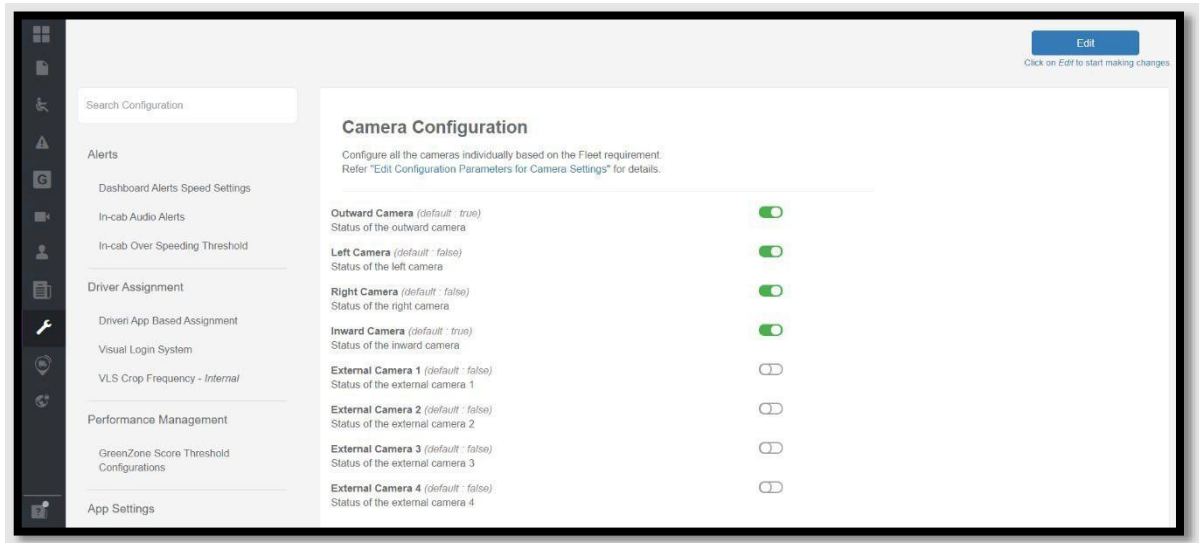
All camera views of a device can be enabled or disabled for a vehicle except the Outward Camera.

4. Click **Apply Changes** to save the changes.

## 5.2 Configuring Camera Settings at the Fleet Level

To configure the camera settings for the Fleet:

1. Navigate to **Provisioning & Configurations > Configurations.**
2. In the **Camera Settings** section, click **Camera Configuration.**

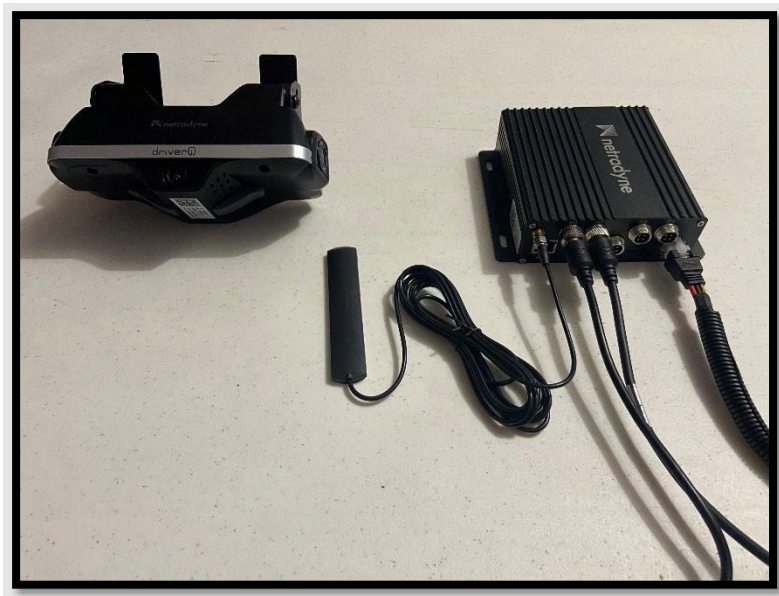


3. Click **Edit** and enable/disable the Camera views, as required.
4. Click **Review Changes** to review the changes made.
5. Click **Save.**

## 5 Pairing the DriveriHub with the Driveri Device

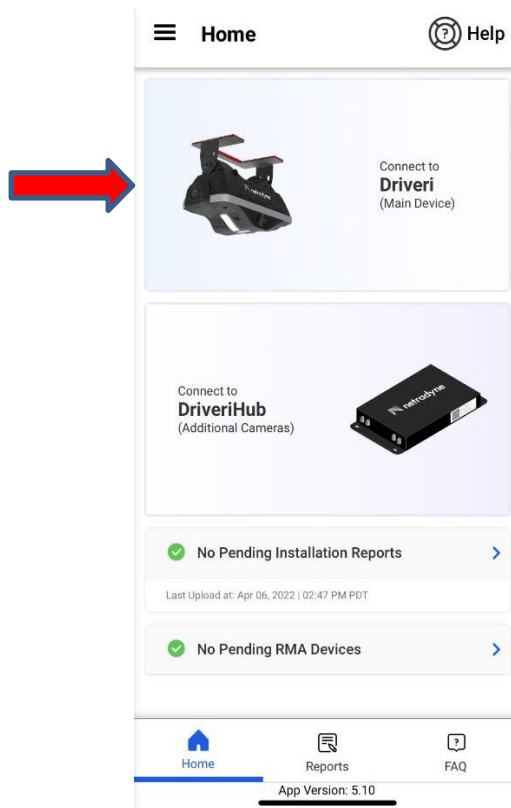
After installing DriveriHub on the vehicle and making all required connections, it must be paired with the Driveri device using the Driveri Installer App.

For more information, refer "[Driveri Installer App](#)".



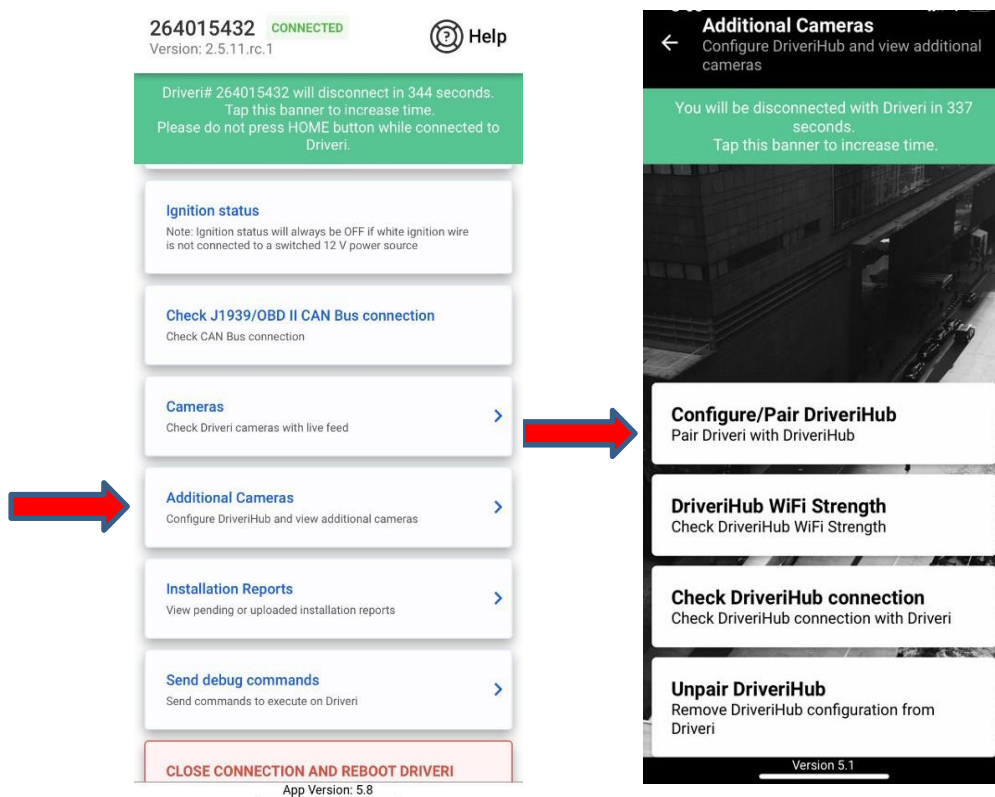
## mDVR Installation Guide

1. Log in to the Driveri Installer App.



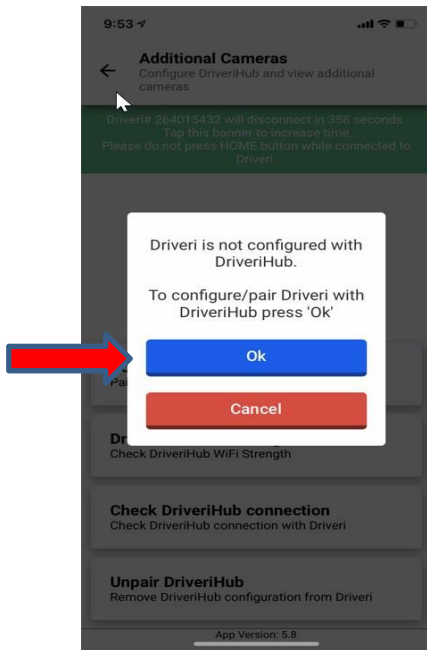
To pair the DriveriHub with the Driveri device:

2. Tap **Connect to Driveri**
3. Tap **Additional Cameras**



## mDVR Installation Guide

4. Tap **Configure/Pair Driveri with DriveriHub.**
5. Tap **OK**

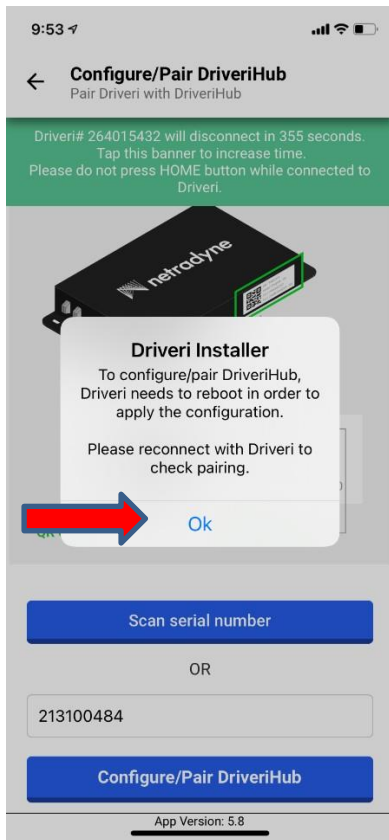


6. Scan or type the serial number.

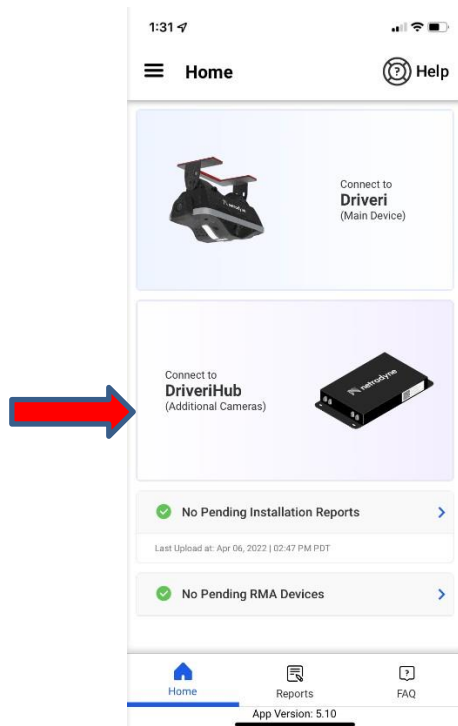


7. Tap **Configure/Pair DriveriHub.**

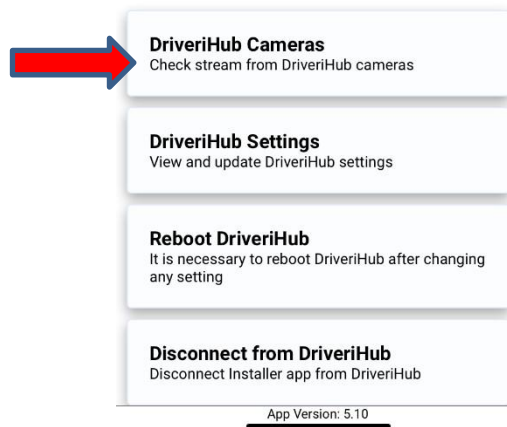
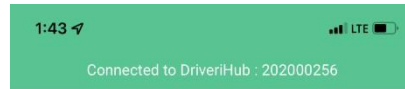
8. Tap **OK** to complete the pairing process



9. To check external camera views, reconnect to DriveriHub, **see step 6**



10. Click on the external cameras



11. Check the camera views on the Installer App. Select the individual camera views or tap **View All** to see all views at once.

